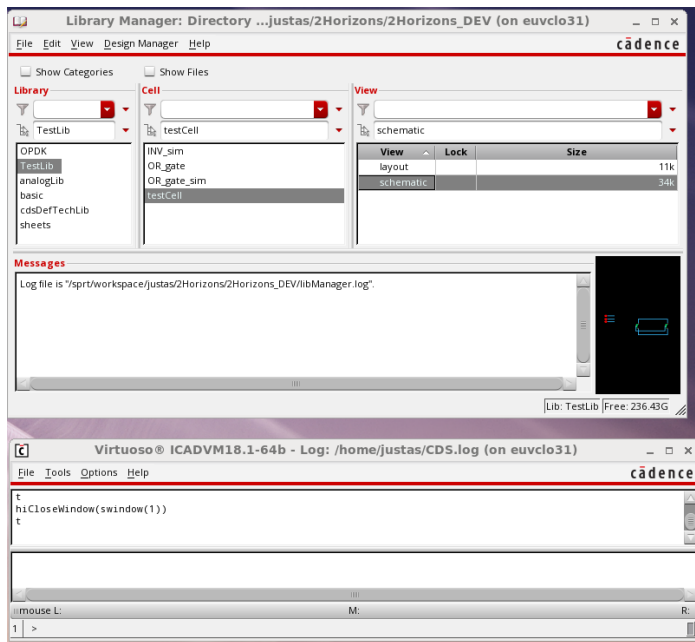
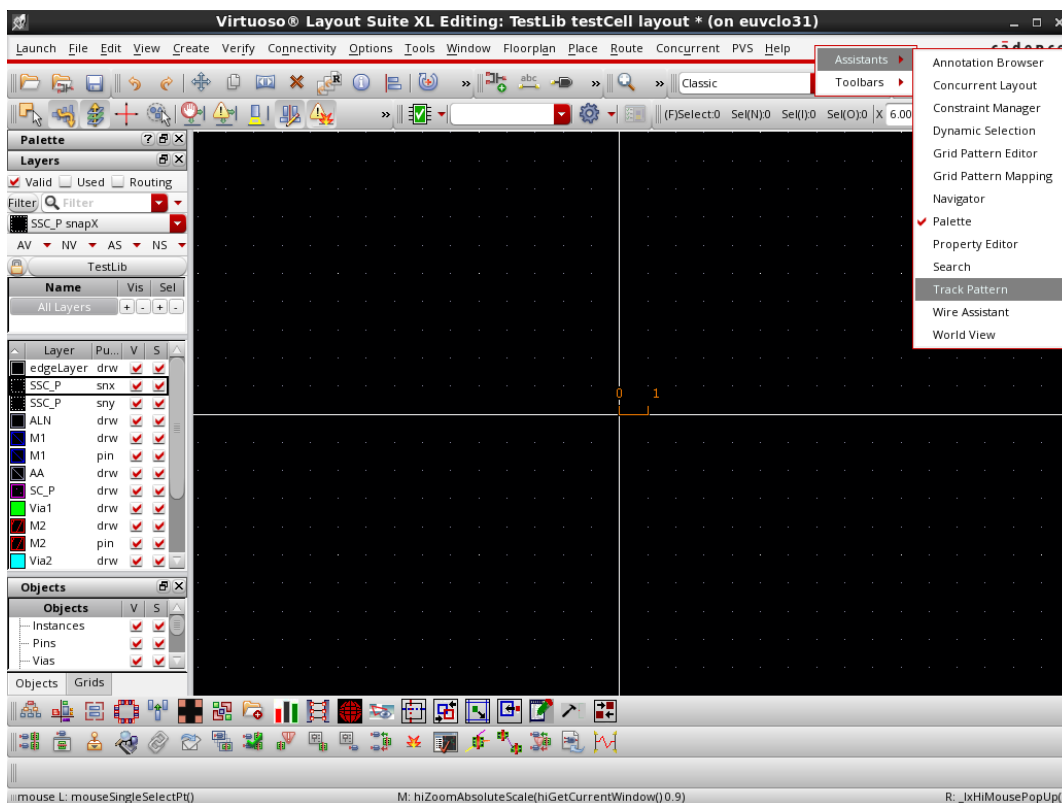


# How to create the snapping grid for the OFET devices

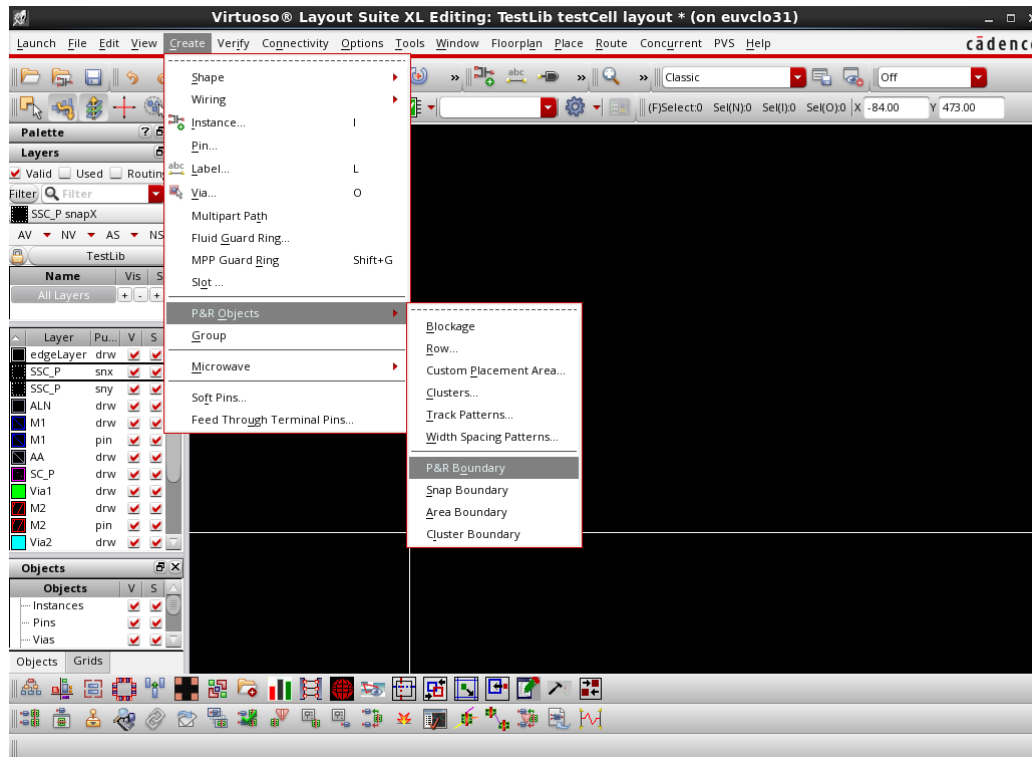
**Step 1.** Open Virtuoso version ICADVM 18.1 from your run directory within the 2Horizons project area.



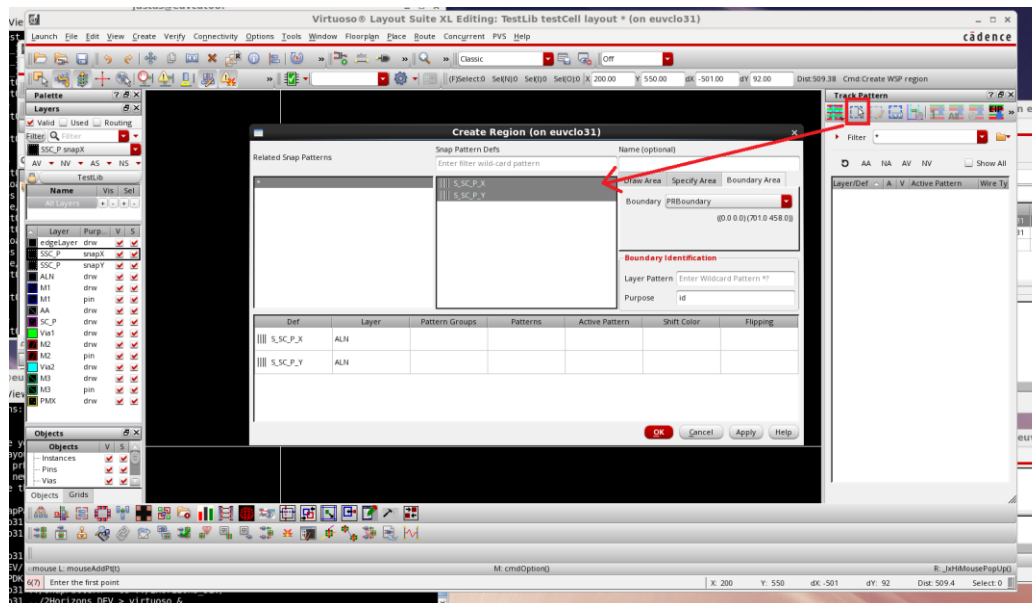
**Step 2.** Open a layout view with Layout XL and enable Track Pattern Assistant.



**Step 3.** Create a PR boundary in your layout canvas (manually or automatically by a command such as Generate All from Source).



**Step 4.** In the Track Pattern Assistant, click on “Create Region” icon, which opens the form shown below. In the “Create Region” form select both S\_SC\_P\_X and S\_SC\_P\_Y snap patterns. Also make sure that in the Boundary Area tab, PRBoundary is selected.



**Step 5.** This creates the snapping grid for the OFET device placement. The corners of the SC\_P shapes (pink shape in the example below) will snap to the mid-points of the newly defined grid.

